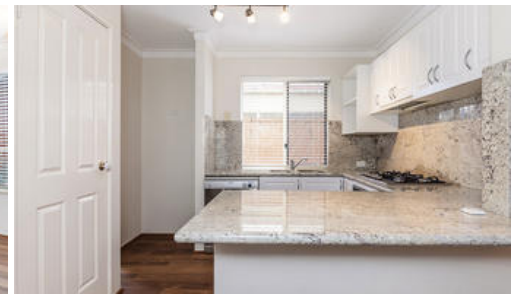


Leased



28B Burt St, Mount Lawley



## Ultimate lifestyle location!

This 3 bedroom townhouse offers easy care living in a superb location, just a short walk to the vibrant North Perth & Mt Lawley Café strips & moments away from the picturesque Hyde Park.

This home features a nicely appointed kitchen, good sized downstairs living, private courtyard & secure parking.

Other features include:

- Master bedroom with built in robe & semi ensuite configuration
- Well-appointed kitchen including stone bench-tops, stone splash back, European appliances & dishwasher
- Ducted air conditioning
- Private courtyard
- Single garage including store room & parking for more
- Separate laundry with drying area

In an amazing location within walking distance to the vibrant hubs of Mount Lawley & North Perth, the beautiful Hyde Park & a short drive or public transport to the Perth CBD.

🛏 3 🚶 1 🚗 1

**Price** \$450 per week  
**Property Type** Rental  
**Property ID** 1069

### Agent Details

Petr Seidel - 08 9207 2088

### Office Details

Xceed Real Estate - Property Management  
Level 8, 3 Hasler Road Herdsman,  
WA, 6017 Australia  
08 9207 2088

**XCEED**   
**REAL ESTATE**

*The above information provided has been furnished to us by the vendor/s. We have not verified whether or not that information is accurate and do not have any belief in one way or the other in its accuracy. We do not accept any responsibility to any person for its accuracy and do no more than pass it on. All interested parties should make and rely upon their own inquiries in order to determine whether or not this information is in fact accurate.*