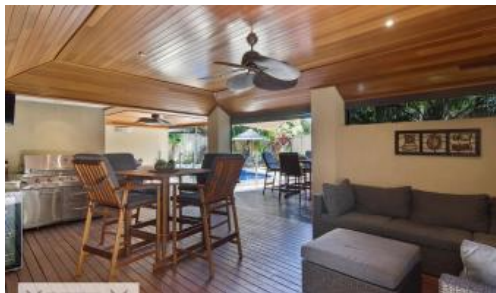


Sold



4 Piver Corner, Ocean Reef



Quality and Grandeur

Enjoying the best of everything by being nestled on a massive 932sqm (approx.) block in cul-de-sac tranquillity, just footsteps away from the sprawling Lexcen Park at the bottom of the street and only minutes away from pristine northern beaches and the future site of the proposed Ocean Reef Boat Harbour redevelopment, this fully-renovated 7 bedroom 2 bathroom plus study two-storey residence has been completely transformed for spacious modern family living.

Beyond the front porch and double-door entrance lies a huge downstairs open-plan family, kitchen, meals and games area with plenty of room for absolutely everybody, before they, via a series of sliding stacker doors, spill outside to take advantage of a stunning rear cedar-lined alfresco entertaining deck with café blinds for complete protection from the elements. A second alfresco – with a ceiling fan and external audio speakers – overlooks a shimmering-blue below-ground swimming pool, whilst a gazebo-style poolside umbrella and a poolside relaxation deck with a shade sail complement an enormous sunken backyard that wraps around to the front of the property.

Back inside, double doors reveal a carpeted theatre room with a cinema-style wall screen to watch your favourite movies on, whilst a central activity room services the minor sleeping quarters where you will find six of the home's bedrooms – one of which has its own "guest" ensuite bathroom, comprising of a shower and toilet for good measure. Upstairs, the true "parent's wing"

7 3 3 932 m2

Price	SOLD
Property Type	Residential
Property ID	15162
Land Area	932 m2

Agent Details

Adam Whitford - 0406 616 608

Office Details

Xceed Real Estate - Sales
Level 8, 3 Hasler Road Herdsman,
WA, 6017 Australia
08 9207 2088

XCEED 
REAL ESTATE

consists of a large lounge room with a stone kitchenette and an appliance nook, as well as seamless outdoor access to an over-sized lined balcony for quiet contemplation, plus the bonus of breathtaking ocean and park views through top-quality sliding stacker windows.

Also on the top floor is a study (or potential seventh bedroom) with mirrored built-in wardrobes and a sumptuous master suite that features a ceiling fan, split-system air-conditioning, a commodious walk-in robe and an open ensuite with tiled flooring, a tree-lined inland vista, a shower, heat lamps, access into the powder room and twin stone-vanity basins. There is ample driveway and verge parking space for your boat, caravan and trailer (or all three), before you even step foot inside an extra-wide remote-controlled three-car garage with high ceilings, an internal clothesline and shopper's entry via the impeccably-appointed laundry.

A short stroll away from Ocean Reef Senior High School and close to Ocean Reef Primary School, other top educational facilities, Mullaloo Beach, the new-look Westfield Whitford City shopping and entertainment complex, world-class golf at Joondalup Resort, public transport and freeway convenience, this spectacular haven really is within an arm's reach of everything, despite its relatively secluded locale. What an absolute showstopper!

Other features include, but are not limited to:

- Solid Marri wooden floorboards throughout
- Split-system air-conditioning and gas-bayonet heating to the open-plan family/meals/games area downstairs
- Stunning kitchen with sparkling granite bench tops and splashbacks, a breakfast bar for casual dining, a walk-in pantry-scully with oven/under-head storage, double sinks, an Asko dishwasher, a Bosch range hood, a six-burner Bosch gas cooktop/oven and splendid backyard views
- Reverse-cycle cassette air-conditioning to activity room downstairs
- Split-system air-conditioning and electric window shutters to parent's retreat/lounge upstairs
- Carpeted bedrooms, including the spacious 2nd/3rd bedrooms downstairs with ceiling fans, mirrored BIR's and shared semi-ensuite access into the main family bathroom – with a shower and toilet access
- 4th lower-level bedroom with a WIR and ceiling fan
- Mirrored BIR's to 5th downstairs bedroom
- Ceiling fan and mirrored BIR's to 6th ground-floor bedroom
- Recessed ceiling to entry foyer
- Under-stair storage
- Downstairs powder room
- Large quality laundry with stone bench tops and built-in storage
- Powered workshop off garage (with outdoor access)
- Smart-wired throughout
- Profile doors throughout
- Feature skirting boards
- Instantaneous gas hot-water system
- Hot and cold water outdoor shower
- Lush wraparound lawns with an access gate off the extensive driveway
- Bore reticulation

- Provisions for future pool heating
- Side access

The above information provided has been furnished to us by the vendor/s. We have not verified whether or not that information is accurate and do not have any belief in one way or the other in its accuracy. We do not accept any responsibility to any person for its accuracy and do no more than pass it on. All interested parties should make and rely upon their own inquiries in order to determine whether or not this information is in fact accurate.