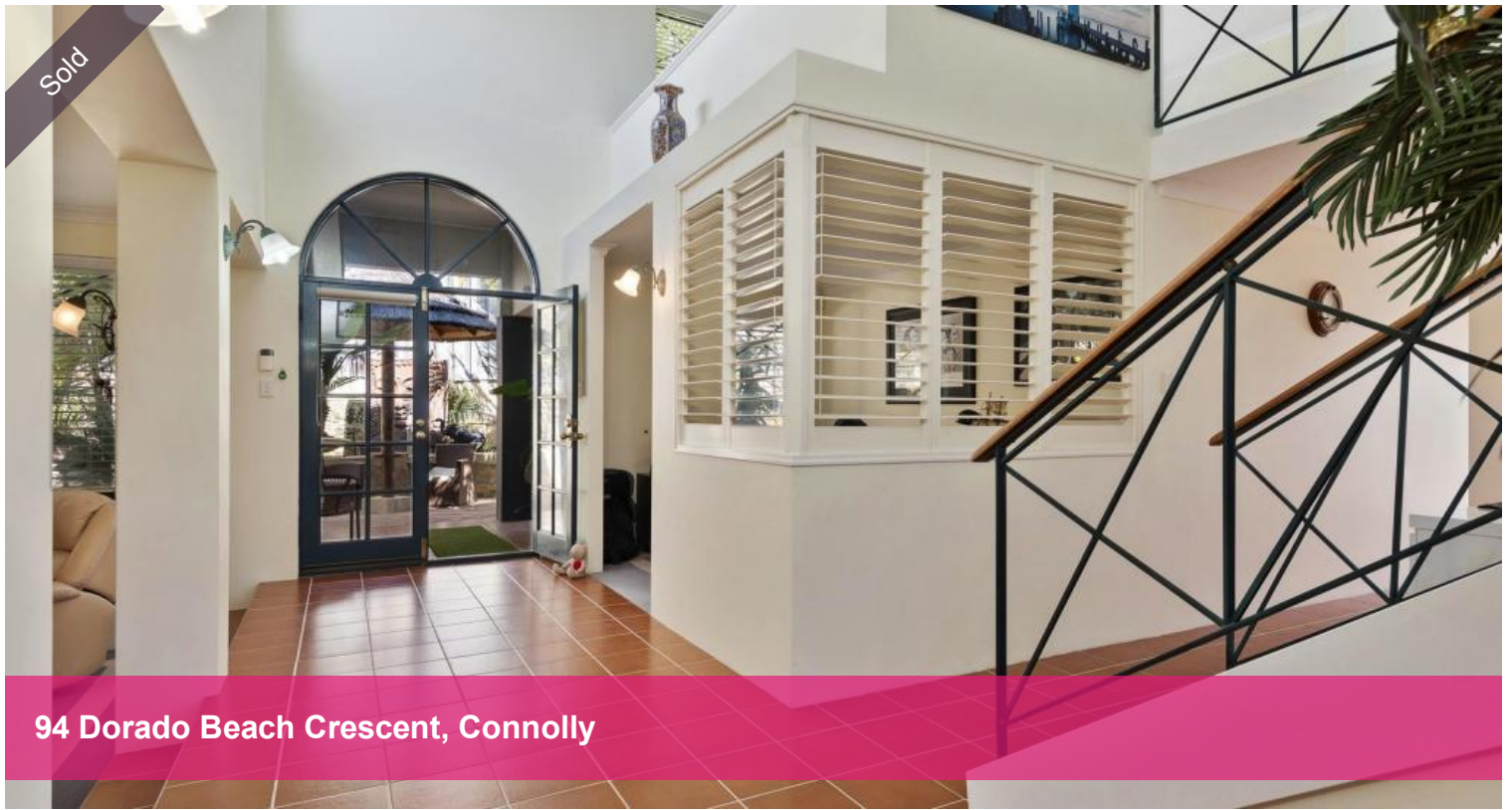


Sold



94 Dorado Beach Crescent, Connolly



Enchantingly Private

Hidden at the end of a long driveway that only adds tranquillity to an already-secluded locale, this spacious Oswald 4 bedroom 2 bathroom two-storey family home offers contemporary comfort and ocean views alongside a leafy and relaxing outdoor setting that finds itself just footsteps away from the fairways of the magnificent Joondalup Resort golf course.

A secure courtyard entrance – coupled by a trickling water feature and gazebo umbrella – has all the trappings of a Balinese resort, whilst the rear of the property is dominated by manicured gardens, exotic walkways, low-maintenance artificial turf and a private gazebo entertaining deck that overlooks the entire backyard. Inside, a tiled entry foyer separates the study from a carpeted and sunken formal lounge room – complete with a feature gas coal fireplace and a built-in storage cupboard.

Also found within this part of the floor plan is a formal dining room that overlooks the lounge, is also sunken and carpeted and features built-in display cabinetry, a powder room, walk-in linen press, under-stair storage, the laundry and three commodious minor bedrooms – one of which doubles as a queen-size second or “guest” suite with a walk-in wardrobe and semi-ensuite access into a light and bright main bathroom, comprising of a shower, separate bathtub, twin-vanity basins and more. An expansive open-plan family and casual meals area graced by high angled ceilings is tiled for easy-care living and is overlooked by an impressively-renovated modern kitchen with stunning stone-transformation tops and splashbacks, ample

🛏 4 🏠 2 🚗 3 📏 985 m2

Price	SOLD
Property Type	Residential
Property ID	15163
Land Area	985 m2

Agent Details

Adam Whitford - 0406 616 608

Office Details

Xceed Real Estate - Sales
Level 8, 3 Hasler Road Herdsman,
WA, 6017 Australia
08 9207 2088

XCEED 
REAL ESTATE

storage options, a breakfast bar for quick bites, double sinks, a floating island bench, a Kleenmaid dishwasher and quality La Germania range-hood, oven and six-burner gas cooktop appliances.

The main hub of the house seamlessly extends outdoors to a whisper-quiet back patio deck, as well as a huge enclosed wraparound alfresco for all seasons' entertaining. Upstairs, a carpeted parent's retreat or activity room services a generous master suite with a walk-in robe, split-system air-conditioning, an awe-inspiring sea and inland vista from its tiled balcony and a charming ensuite bathroom where a bubbling spa meets a shower, separate toilet, stylish light fittings and twin marble vanities.

Walk to bus stops, a plethora of local parklands and the excellent Currambine Central Shopping Centre from this enviable location that is also very close to Connolly Primary School and other educational facilities, the freeway, Currambine Train Station, the Joondalup CBD and pristine northern beaches. Spectacular serenity awaits you here!

Other features include, but are not limited to:

- Remote-controlled double garage with rear access to the back patio and gardens
- Roller-door access from the driveway, into a powered workshop that also acts as an extra single garage
- Ceiling fan, split-system air-conditioning and gas-bayonet heating to the family/meals area
- Fan and feature down lighting to enclosed alfresco area (with backyard and patio access)
- Carpeted study with feature white internal plantation shutters
- Carpet to all bedrooms, including a 3rd minor downstairs bedroom with BIR's
- 4th ground-floor bedroom with a WIR
- Double linen/broom cupboard to laundry (with outdoor access to clothesline/drying area)
- A series of gorgeous double French doors throughout – including the main entrance and a set that links the minor sleeping quarters to the side exterior of the property
- Solar-power panels
- Ducted and zoned reverse-cycle air-conditioning
- Ducted-vacuum system
- Security-alarm system
- Reticulation
- Large garden shed
- Easy-care gardens
- Insulation
- Gas hot-water system
- Foxtel connectivity
- Built in 1996

The above information provided has been furnished to us by the vendor/s. We have not verified whether or not that information is accurate and do not have any belief in one way or the other in its accuracy. We do not accept any responsibility to any person for its accuracy and do no more than pass it on. All interested parties should make and rely upon their own inquiries in order to determine whether or not this information is in fact accurate.