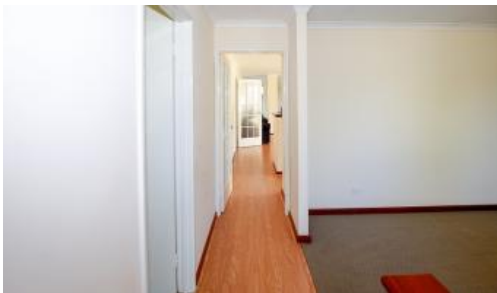


Sold



44 Woodbine Loop, Tapping



HOME OPEN SUN 11TH AUG...1.15PM - 2.00PM

Andrew and Liselle from Team Thompson have the pleasure in presenting 44 WOODBINE LOOP TAPPING

Set on an extra large 700m2 block with potential drive through side access perfect for the backyard workshop or to park the caravan, boat or trailer

Easy access and priced to sell please call to view anytime

Extra large 700m2 block with potential drive through side access to backyard

Great location close to all amenities

Security screen front door entry

Spacious master bedroom with extra retreat, split system air-conditioning and ceiling fan

Light and bright ensuite with shower and heat lamp

Bedrooms 2 and 3 are good size and both with double sliding door robes with inbuilt shelving and ceiling fans

2nd bathroom with bath and shower and heat lamp

Separate lounge / media room

Central kitchen with overhead cupboards, wall oven, 4 burner gas hotplate, rangehood and plenty of bench / cupboard space

Spacious open plan meals and living areas with split system air-conditioning

Neutral decor t/out

Outdoor alfresco area overlooking an extra large backyard for whatever you desire

2 outdoor sheds

Double carport with internal access to living area and door access to

🛏 3 🏠 2 🚗 2 📏 700 m2

Price	SOLD
Property Type	Residential
Property ID	16038
Land Area	700 m2

Agent Details

Jonathan Marlow - 08 9402 2299

Office Details

Xceed Real Estate - Central
3 Hasler Rd Herdsman, WA, 6017
Australia
08 9207 2088

XCEED 
REAL ESTATE

frontyard

Built in 2001

Block size: 700m2

The above information provided has been furnished to us by the vendor/s. We have not verified whether or not that information is accurate and do not have any belief in one way or the other in its accuracy. We do not accept any responsibility to any person for its accuracy and do no more than pass it on. All interested parties should make and rely upon their own inquiries in order to determine whether or not this information is in fact accurate.