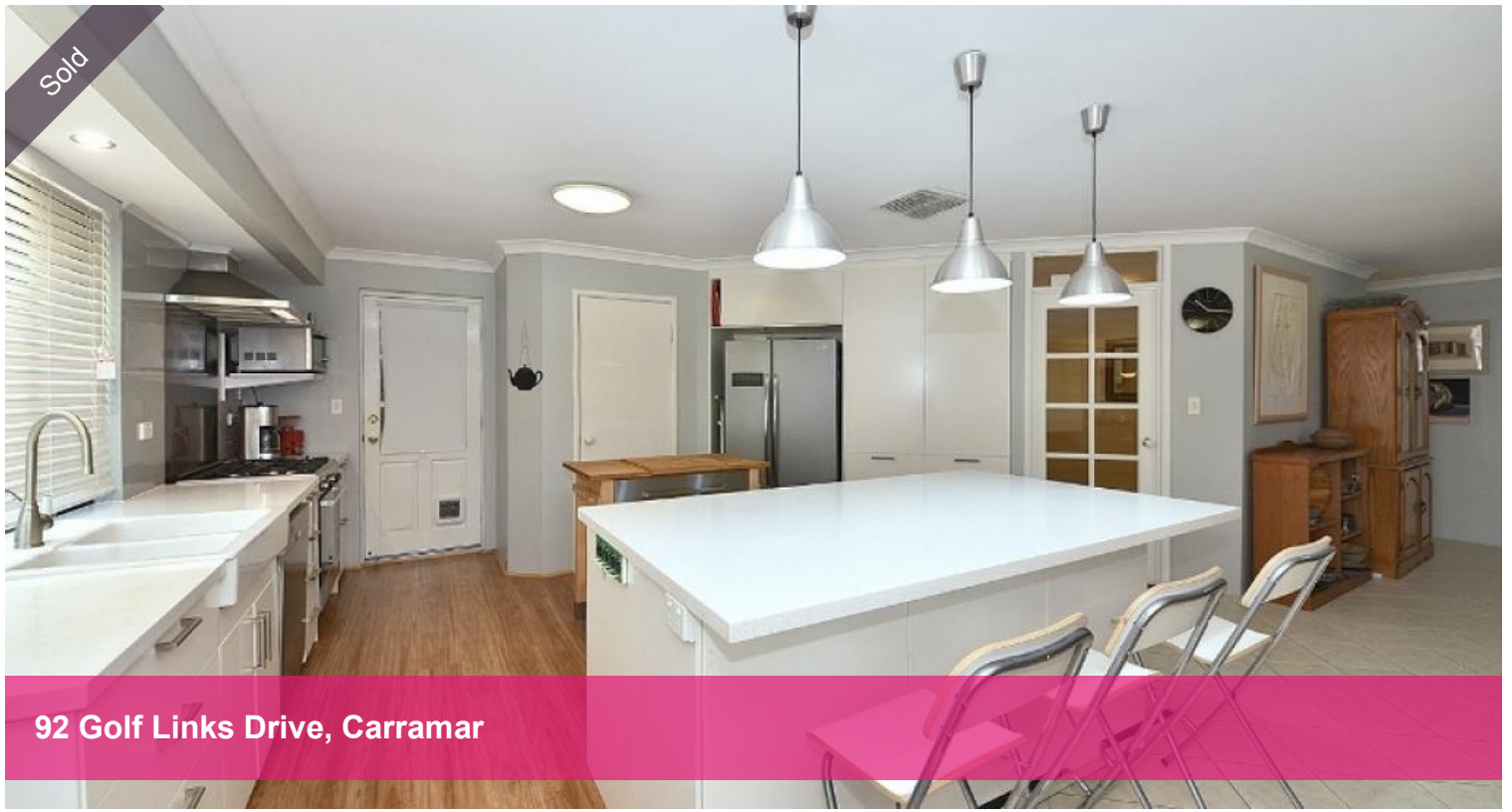


Sold



92 Golf Links Drive, Carramar



## HOME OPEN BY APPOINTMENT

### GOLF COURSE LOCATION

*Andrew and Liselle from Team Thompson have the pleasure in presenting 92 GOLF LINKS DRIVE CARRAMAR*

*Spacious 4 x 2 with below ground pool, set on an extra large 727m2 block overlooking Carramar Golf Course*

*Please call to view anytime!*

*Premier location overlooking Carramar Golf Course*

*Solid front door entry with security screen*

*Spacious master bedroom with inbuilt cupboards, extra-large WIR and security shutters to front windows*

*Renovated ensuite with twin shower with glass screen, full length twin vanities and stylish fixtures and fittings*

*Bedroom 2, 3 and 4 are all double in size with robes*

*Fully renovated 2nd bathroom which also acts as a guest powder room with bath, shower with screen and full length vanity / cupboards*

 4  2  2  727 m2

<b>Price</b>	SOLD
<b>Property Type</b>	Residential
<b>Property ID</b>	16660
<b>Land Area</b>	727 m2

### Agent Details

Jonathan Marlow - 08 9402 2299

### Office Details

Xceed Real Estate - Central  
3 Hasler Rd Herdsman, WA, 6017  
Australia  
08 9207 2088

**XCEED**   
REAL ESTATE

*Separate formal lounge / Media room with split system air-conditioning*

*Stylish renovated kitchen with stone benchtops, extra-large stainless steel oven and hotplates, rangehood, dishwasher, fridge/freezer recess, feature cupboards, walk in pantry, breakfast bar and all with ample bench and cupboard space*

*Garage entry through to kitchen*

*Open plan family, meals and games room with sliding door access to outdoors and split system air-conditioning*

*Ducted evaporative air-conditioning throughout*

*Neutral decor throughout including feature doors, lighting, floorcoverings and window finishings*

*Well appointed laundry*

*Storage cupboards to both front and back hallway*

*Tonnes of room outdoors with an awesome pitched patio area with café blinds overlooking lawn area for the kids to play, plus a fully fenced below ground pool*

*5kw (24) Solar panels to roof*

*Separate enclosed workshop or extra space for storage*

*Double garage with internal access to kitchen*

*Built 2003*

*Block size extra large **727m2***

*The above information provided has been furnished to us by the vendor/s. We have not verified whether or not that information is accurate and do not have any belief in one way or the other in its accuracy. We do not accept any responsibility to any person for its accuracy and do no more than pass it on. All interested parties should make and rely upon their own inquiries in order to determine whether or not this information is in fact accurate.*