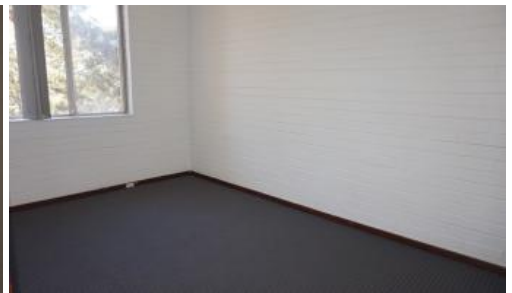


Leased

44/50 Kirkham Hill Terrace, Maylands



GREAT VALUE FOR THIS 2 BEDROOM UNIT

🛏 2 🚿 1 🚗 1

Enjoy this 2-bedroom inner-city unit close to the banks of the Swan River. It is ideally located close to the riverside Maylands Peninsula Golf Course, Belmont Racecourse, Optus Stadium, and just a short drive to Perth CBD and Maylands Train Station.

Price

Offers from \$200 per week

Property Type

Rental

Property ID 24850

Agent Details

Petr Seidel - 08 9207 2088

Office Details

Xceed Real Estate - Property Management
Level 8, 3 Hasler Road Herdsman,
WA, 6017 Australia
08 9207 2088

Features include:

- Unfurnished
- 1 Bedroom
- 1 Bathroom
- 1 Parking bay
- Gas cooktop
- Plenty of cupboard space
- Open plan living
- Bathroom and Toilet combined
- Balcony with lovely views
- Visitors parking bay
- Large pool in complex along with extra laundry facilities

XCEED 
REAL ESTATE

- Lift in complex
- Short stroll to river and public transport and only a short drive to CBD

No pets permitted

The above information provided has been furnished to us by the vendor/s. We have not verified whether or not that information is accurate and do not have any belief in one way or the other in its accuracy. We do not accept any responsibility to any person for its accuracy and do no more than pass it on. All interested parties should make and rely upon their own inquiries in order to determine whether or not this information is in fact accurate.