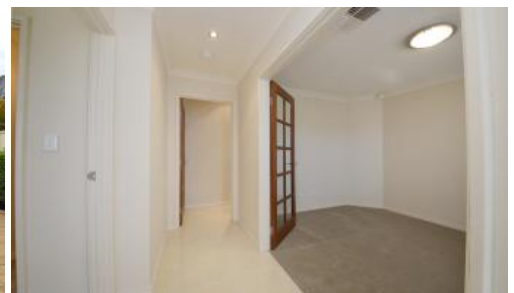


Sold



12 Pando Crescent, Landsdale



HOME OPEN SUN 1ST AUG....11.30AM – 12.00PM

Andrew and Liselle from Team Thompson have the pleasure in presenting 12 PANDO CRESCENT, LANDSDALE Spacious 3 bedroom, 2 bathroom plus separate enclosed lounge / media room, ducted air-conditioning and outdoor alfresco entertaining With fresh new paint, new carpets and a fabulous presentation throughout it's guaranteed to sell fast! Situated on a corner block with paved area for extra parking

Stylish frontage with feature portico entry to foyer Spacious master bedroom with extra large WIR Light and bright modern ensuite with extra length shower (with screen) Bedrooms 2 and 3 include mirrored sliding door robes Modern 2nd bathroom with bath and shower (with screen) Enclosed separate lounge / media room with feature French doors Chef's kitchen with overhead cupboards and shelving, 5 burner gas cooktop, stainless steel oven, rangehood, tiled splashbacks, microwave recess, and fridge recess (with plumbing) Open plan meals and living rooms with sliding door access to outdoor alfresco All new paint through-out with plus brand new carpets High ceilings to main living areas Ducted evaporative air-conditioning throughout Well-equipped laundry with inbuilt storage cupboard Alfresco entertaining surrounded by low maintenance easy care gardens Double lock up garage with extra storage area and internal access Built approx. 2007 Block size 308m2

3 2 2 308 m2

Price	SOLD
Property Type	Residential
Property ID	26441
Land Area	308 m2

#### Agent Details

Jonathan Marlow - 08 9402 2299

#### Office Details

Xceed Real Estate - Sales  
Level 8, 3 Hasler Road Herdsman,  
WA, 6017 Australia  
08 9207 2088

**XCEED**   
REAL ESTATE

*The above information provided has been furnished to us by the vendor/s. We have not verified whether or not that information is accurate and do not have any belief in one way or the other in its accuracy. We do not accept any responsibility to any person for its accuracy and do no more than pass it on. All interested parties should make and rely upon their own inquiries in order to determine whether or not this information is in fact accurate.*