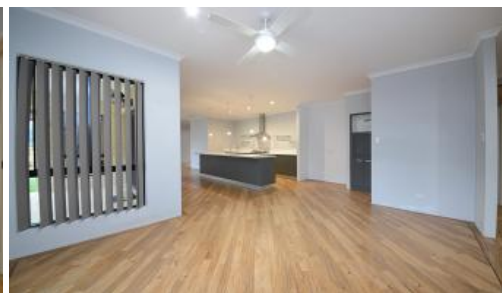
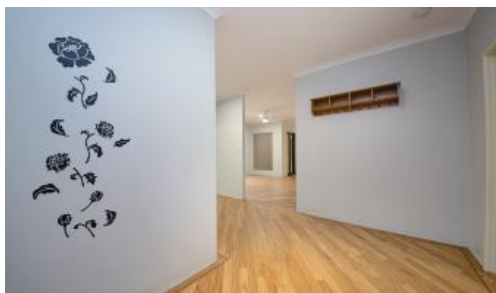


Sold



22 Serrata Road, Banksia Grove



HOME OPEN SUN 15TH AUGUST .2.15PM – 2.45PM

Andrew and Liselle from Team Thompson have the pleasure in presenting 22 SERRATA ROAD BANKSIA GROVE

A modern and spacious 4 x 2 plus study, activity, enclosed home theatre and extra large meals and living

Step outside to alfresco entertaining with easycare, low maintenance backyard

Ready to move into now please contact us to view anytime

Feature double door entry with security screens

Enclosed home theatre with feature French doors and split system air-conditioning

Study/home office or 5<sup>th</sup> bedroom if required

King-sized master bedroom with walk in robe, TV point, ceiling fan and split system air-conditioning

Spacious ensuite with walk in shower, full length vanity / mirror, modern fixtures and fittings and separate WC

4 bedrooms 2 bathrooms 2 car spaces 525 m2

|                      |             |
|----------------------|-------------|
| <b>Price</b>         | SOLD        |
| <b>Property Type</b> | Residential |
| <b>Property ID</b>   | 26515       |
| <b>Land Area</b>     | 525 m2      |

#### Agent Details

Jonathan Marlow - 08 9402 2299

#### Office Details

Xceed Real Estate - Sales  
Level 8, 3 Hasler Road Herdsman,  
WA, 6017 Australia  
08 9207 2088

**XCEED**   
REAL ESTATE

Bedrooms 2, 3 and 4 are all double in size with mirrored sliding door robes and ceiling fans

Activity room / computer nook conveniently set amongst minor bedrooms

Modern 2<sup>nd</sup> bathroom with bath and shower with glass screen

Magnificent central kitchen with stainless steel appliances, dishwasher, rangehood, fridge / freezer recess, walk in pantry and all with tonnes of bench / cupboard space and feature lighting

Separate open plan meals and living areas all with high ceilings and commanding views to outdoors plus split system air-conditioning and ceiling fans

Spacious laundry with bench and cupboards

Storage cupboard to hallway

Modern fixtures and fittings through out including flooring, lighting, feature doors and window treatments

Superb outdoor alfresco area with poured limestone paving and roll down café blinds

Separate BBQ area

Outdoor shed

Double lockup garage with internal access to foyer aswell as door access to backyard

Built 2010

Block size: 525m<sup>2</sup>

*The above information provided has been furnished to us by the vendor/s. We have not verified whether or not that information is accurate and do not have any belief in one way or the other in its accuracy. We do not accept any responsibility to any person for its accuracy and do no more than pass it on. All interested parties should make and rely upon their own inquiries in order to determine whether or not this information is in fact accurate.*