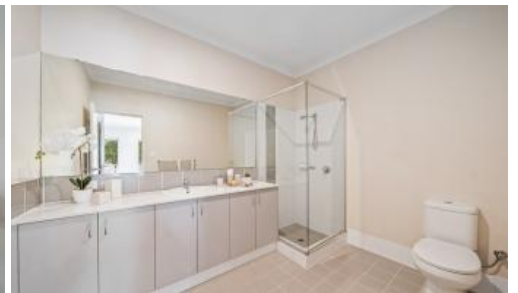


Sold



295 Banrock Drive, Ellenbrook



Fresh, Spacious and Family Friendly!

Open by private inspections only! Call Simar Singh on 0433 767 296.

Get into a place with space for an entire family to enjoy.

This stunning 4x2 plus theatre home has been built to accommodate an entire family, giving everyone the opportunity to enjoy time with others or on their own as needed. The floorplan extends over 276sqm – bigger than a lot of blocks these days – and each of the bedrooms is large enough to accommodate a built-in wardrobe and double, queen, or king bed, plus a chair, a bookshelf, and other furniture or appliances to maximise an individual's comfort in their space. Each of the bedrooms also features a ceiling fan and window security to maximise natural light and airflow in the rooms day and night.

Communal areas have been beautifully tiled and freshly painted, so you can step into a place which truly feels new. The spacious open-plan kitchen/living/dining room area has been accented with a long stonetop breakfast bar and plenty of cupboard storage to make mornings easy, and there's no need to worry about waking up early to water the gardens – the healthy waterwise plants and set-and-forget reticulation mean you can truly focus on family time. There's also a covered alfresco and double garage set to the rear making it easy to get out and go each day.

🛏️ 4 🚗 2 🚲 2

| | |
|----------------------|-------------|
| Price | SOLD |
| Property Type | Residential |
| Property ID | 27141 |

Agent Details

Jonathan Marlow - 08 9402 2299

Office Details

Xceed Real Estate - Sales
Level 8, 3 Hasler Road Herdsman,
WA, 6017 Australia
08 9207 2088

XCEED 
REAL ESTATE

The property is set on a 410sqm block placed well within the Anne Hamersley Primary School and Aveley Senior High School zones. There's also convenient access to early learning centres, parks, nature reserves, and Maralla Road/Railway Parade. Weekends might include a quick trip to new Brooklane Shopping Centre or a round of Mini-Golf at The Vines Resort, and there's more to come over the next few years, with the Ellenbrook Train Station, Recreation and Aquatic Centre and further additions to Ellenbrook Central currently underway.

Book time to visit this home by calling Simar on 0433 767 296.

Property Features:

- 276sqm floorplan on 410sqm block
- Four bedrooms
- Master bed ensuite plus main bathroom
- Lounge plus theatre room
- Kitchen with stone benchtops and storage
- Fresh internal paint
- Tiled communal areas
- Ceiling fans plus split system aircon
- Door and window security grilles
- Undercover alfresco
- Waterwise outdoor areas
- Rear double garage

Location Highlights:

- 190m to Brockman Park and Annie's Landing Playground
- 3.4km to Brooklane Shopping Centre
- 3.7km to Ellenbrook District Open Space
- 3.7km to The Vines Resort
- 800m to Ellenbrook School of Early Learning
- 1km to Anne Hammersley Primary School
- 3.2km to Aveley Secondary College
- 4.8km to Holy Cross College
- 45m to 955 bus stop
- 7.7km to Tonkin Hwy
- 19km to Midland
- 26km to Perth Airport

information is accurate and do not have any belief in one way or the other in its accuracy. We do not accept any responsibility to any person for its accuracy and do no more than pass it on. All interested parties should make and rely upon their own inquiries in order to determine whether or not this information is in fact accurate.