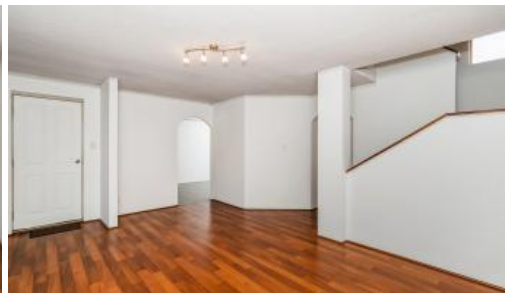


Sold



Unit 19, 15 Jugan St, Mount Hawthorn



Smart & Central

Nestled towards the back of a secure and beautifully maintained complex, this free-standing, two-story townhouse is easily identified by the plumes of wisteria, which provide a gorgeous privacy screen for the home's front windows. Inside, you'll find a safe place to relax while enjoying the view of sub-tropical palms and ferns from the living room or enjoying the figs, oranges, lemons and blackberries growing in the courtyard.

This freshly painted 3-bedroom residence has everything you need: kitchen with gas hotplates and dual sink, bathroom with shower over bath (plus a separate powder room), and split system air conditioning. There's also plenty of storage space with 2x double wardrobes built into the master bedroom, a pantry, laundry storage and a brick storage unit at the back of the house. It's an ideal place for people who want to have everything they need in one location.

With the Glendalough Train Station, multiple bus stops and The Garden Office Park only a few minutes' walk away, you could be forgiven for selling your car – living here and taking advantage of the public transport options on offer could save you plenty of time and fuel money. If you did choose to keep a vehicle, there's a petrol station nearby and easy access to Mitchell Freeway and Scarborough Beach Road. Bunnings, Officeworks, Woolworths and IKEA are only a little further away.

 3  1  1

Price	SOLD
Property Type	Residential
Property ID	27150

Agent Details

Hamish Laidlaw - 0417 971 528

Office Details

Xceed Real Estate - Sales
Level 8, 3 Hasler Road Herdsman,
WA, 6017 Australia
08 9207 2088

XCEED 
REAL ESTATE

Take the time to explore this convenient and security-conscious gem. You'll see for yourself - there aren't many others like it.

Call Hamish Laidlaw on 0417 971 528 to book an inspection.

Property Features:

- Set in 'The Townhouses' secure complex with CCTV
- Large master bedroom with 2x double BIR, aircon & fan
- Second bedroom with double BIR, aircon & fan
- Third bedroom with fan
- Bathroom with shower over bath
- Separate toilet
- Tiled kitchen/dining room
- Living room with aircon, large windows and floorboards
- Separate Laundry with guest toilet
- Carport with rear access
- Paved courtyard with fruit trees
- No common walls

Location Highlights:

- 1.7km to Glendalough Open Space/Lake Herdsman
- 2.5km to Lake Monger
- 2.9km to Dog Swamp Shopping Centre
- 1km to Indigo Montessori Child Care & Kindy
- 1.4km to Chrysalis Montessori School
- 1.9km to Mount Hawthorn Primary School
- 2.0km to Bold Park Community School
- 350m to Scarborough Beach Road
- 600m to Glendalough Train Station
- 650m to Mitchell Freeway
- 7.7km to CBD

The above information provided has been furnished to us by the vendor/s. We have not verified whether or not that information is accurate and do not have any belief in one way or the other in its accuracy. We do not accept any responsibility to any person for its accuracy and do no more than pass it on. All interested parties should make and rely upon their own inquiries in order to determine whether or not this information is in fact accurate.