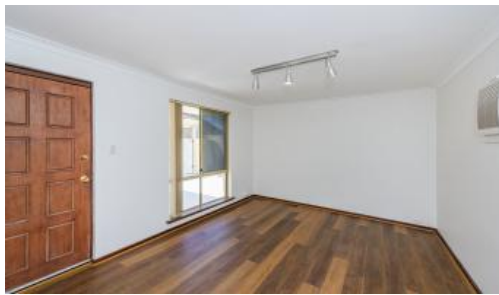


Sold



Unit 3, 77 Valentine Ave, Dianella



Easy-Care Villa close to Morley Galleria

Enjoy life on easy street in this low-maintenance home in Dianella.

The rear brick and tile abode is situated close to major shopping amenities – Morley Galleria, Dianella Plaza and Coventry Village – with ECU Mount Lawley, schools and several local parks moments away.

Inside, you'll appreciate the bright open plan lounge room's new laminate timber flooring, adding warmth to the space and complimenting the kitchen's white gloss cabinetry and tiled splashbacks. You'll also find a large pantry, double sink, a dishwasher and stainless steel electric cooking appliances – everything you need to whip up treats for your family and friends.

All three bedrooms feature double mirrored robes, blinds and ceiling fans, and are serviced by the renovated, fully-tiled bathroom, where you'll find a heat lamp, rain shower over the bathtub, and a stone-topped vanity.

Outside, the paved area is ready to accommodate your alfresco setting and potted plants - simply add a market umbrella or shade sail to enjoy the fresh air year-round - while the low maintenance gardens will help keep your water bills nice and affordable.

3 1 2

Price SOLD
Property Type Residential
Property ID 27374

Agent Details

Office Details

Xceed Real Estate - Sales
Level 8, 3 Hasler Road Herdsman,
WA, 6017 Australia
08 9207 2088

XCEED 
REAL ESTATE

This lock and leave three-bedroom home is ideally suited to first time buyers or investors. It's a great choice for those seeking proximity to university, schools, and excellent shopping amenities, and convenient access to Morley Drive and Reid Highway. Contact Tibor Kiss to register your interest today on 0412 200 188.

Features:

- Rear 246sqm block
- 3 Bedrooms, 1 Bathroom
- Under cover parking
- Newly renovated kitchen with stainless steel appliances and dishwasher
- New laminate flooring in the living area
- Evaporative cooling unit in the living area
- Fully-tiled, modern bathroom with a bathtub
- Freshly painted internally
- Mirrored built-in robes and ceiling fans in each bedroom
- Paved alfresco courtyard and easy-care gardens
- Close access to public transport and major shopping centres
- Suited to first home buyers and investors

Location:

- Nearby bus stops along Lennard Street and Morley Drive
- 300m to Fitzroy Light Reserve
- 500m to West Morley Primary School
- 1.3km to Dianella Regional Open Space
- 1.5km to Coventry Village Shopping Centre
- 1.6km to Dianella Plaza
- 2km to Rudloc Road Medical & Dental Centre
- 2.3km to Morley Galleria Shopping Centre
- 2.5km to John Forrest Secondary College
- 4.6km to Edith Cowan University Mount Lawley Campus

The above information provided has been furnished to us by the vendor/s. We have not verified whether or not that information is accurate and do not have any belief in one way or the other in its accuracy. We do not accept any responsibility to any person for its accuracy and do no more than pass it on. All interested parties should make and rely upon their own inquiries in order to determine whether or not this information is in fact accurate.