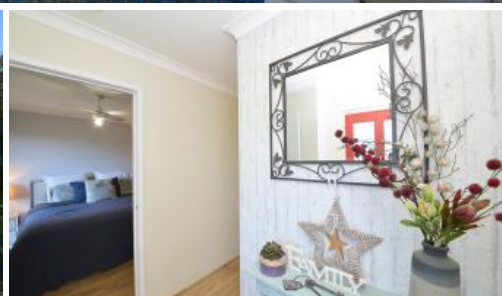


Sold



8 Munderee Pl, Wanneroo



HOME OPEN SUN 12TH JUNE 1:00PM – 1:30PM

Andrew and Liselle from Team Thompson have the pleasure in presenting 8 MUNDEREE PLACE WANNEROO

Well presented 4 x 1 family home on an extra-large 718m2 block with a lakeside location and within walking distance to all of Wanneroo's local amenities.

Step outside to a supersized below ground pool, separate lawn area for the kids to play plus tonnes of room for extra parking or a workshop.

Please contact us anytime for more information on this sensational family home.

Premier location with Lake Joondalup on your doorstep and within walking distance to all of Wanneroo's local amenities

Perfect street appeal with enclosed front yard surrounded by feature fencing

Solid front door entry to separate foyer

Spacious master bedroom with ceiling fan and robe recess

Bedroom 2, 3 and 4 are all generous in size with inbuilt robes to beds 2 and 4

4 1 1

Price

SOLD

Property Type

Residential

Property ID

27598

Agent Details

Jonathan Marlow - 08 9402 2299

Office Details

Xceed Real Estate - Sales
Level 8, 3 Hasler Road Herdsman,
WA, 6017 Australia
08 9207 2088

XCEED
REAL ESTATE

Fully renovated bathroom with walk in shower with glass screen, heat lamp and modern vanity

Separate formal lounge / Media room with split system air-conditioning

Spacious and modern kitchen with stainless steel appliances, induction hotplates, dishwasher, fridge/freezer recess, feature overhead cupboards, tiled splashbacks, separate utility bench and all with ample bench and cupboard space

Open plan family and meals with views to outdoor entertaining

Evaporative air-conditioning through out

Modern decor through out including feature doors, lighting, floorcoverings, skirtingboards and window finishings

Well appointed laundry

Patio outdoor entertaining area featuring limestone walls and stepping upto an extra large, fully fenced below ground pool

Lawn area for the kids to play surrounded by manicured gardens

Separate concrete paved area ideally located behind the carport

Solar panels to roof

Double carport with drive through rear access

Built 1984

Block size 718m2

The above information provided has been furnished to us by the vendor/s. We have not verified whether or not that information is accurate and do not have any belief in one way or the other in its accuracy. We do not accept any responsibility to any person for its accuracy and do no more than pass it on. All interested parties should make and rely upon their own inquiries in order to determine whether or not this information is in fact accurate.