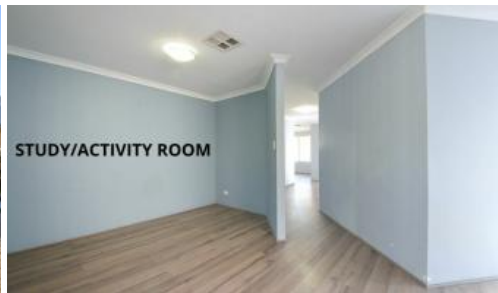


Sold



15 Messina Dr, Sinagra



Spacious and Modern

Andrew and Liselle from Team Thompson have the pleasure in presenting 15 MESSINA DRIVE SINAGRA

Spacious 4 x 2 family with separate living zones including study, lounge/media room and open plan meals, family and games room

Step outside to easy care patio entertaining with tonnes of lawn for kids to play

Located directly across from Mirto Park it's the ideal family home

Please contact us to view anytime

Neat and tidy street appeal directly overlooking Mirto park

Security screen front door entry

Master bedroom with WIR

Light and bright ensuite with shower, vanity and toilet

Study/activity

🛏 4 🚿 2 🚗 2

Price	SOLD
Property Type	Residential
Property ID	27635

Agent Details

Jonathan Marlow - 08 9402 2299

Office Details

Xceed Real Estate - Sales
Level 8, 3 Hasler Road Herdsman,
WA, 6017 Australia
08 9207 2088

XCEED 
REAL ESTATE

Separate formal lounge / dining or media room

Bedrooms 2, 3 and 4 include built in robes

2nd Bathroom with vanity, shower and bath

Central kitchen with built in pantry, fridge recess, 4 burner gas hotplates, wall oven and all with ample bench / cupboard space

Open plan meals, living and games room with sliding door access to backyard

Ducted evaporative air-conditioning

Home security system

Spacious outdoor area with full length patio overlooking feature garden beds, separate lawn area with plenty of room for a pool

Lock up outdoor shed

Double carport with gated access to backyard

Full length driveway for extra parking

Built approx 2006

Block size..480m²

The above information provided has been furnished to us by the vendor/s. We have not verified whether or not that information is accurate and do not have any belief in one way or the other in its accuracy. We do not accept any responsibility to any person for its accuracy and do no more than pass it on. All interested parties should make and rely upon their own inquiries in order to determine whether or not this information is in fact accurate.