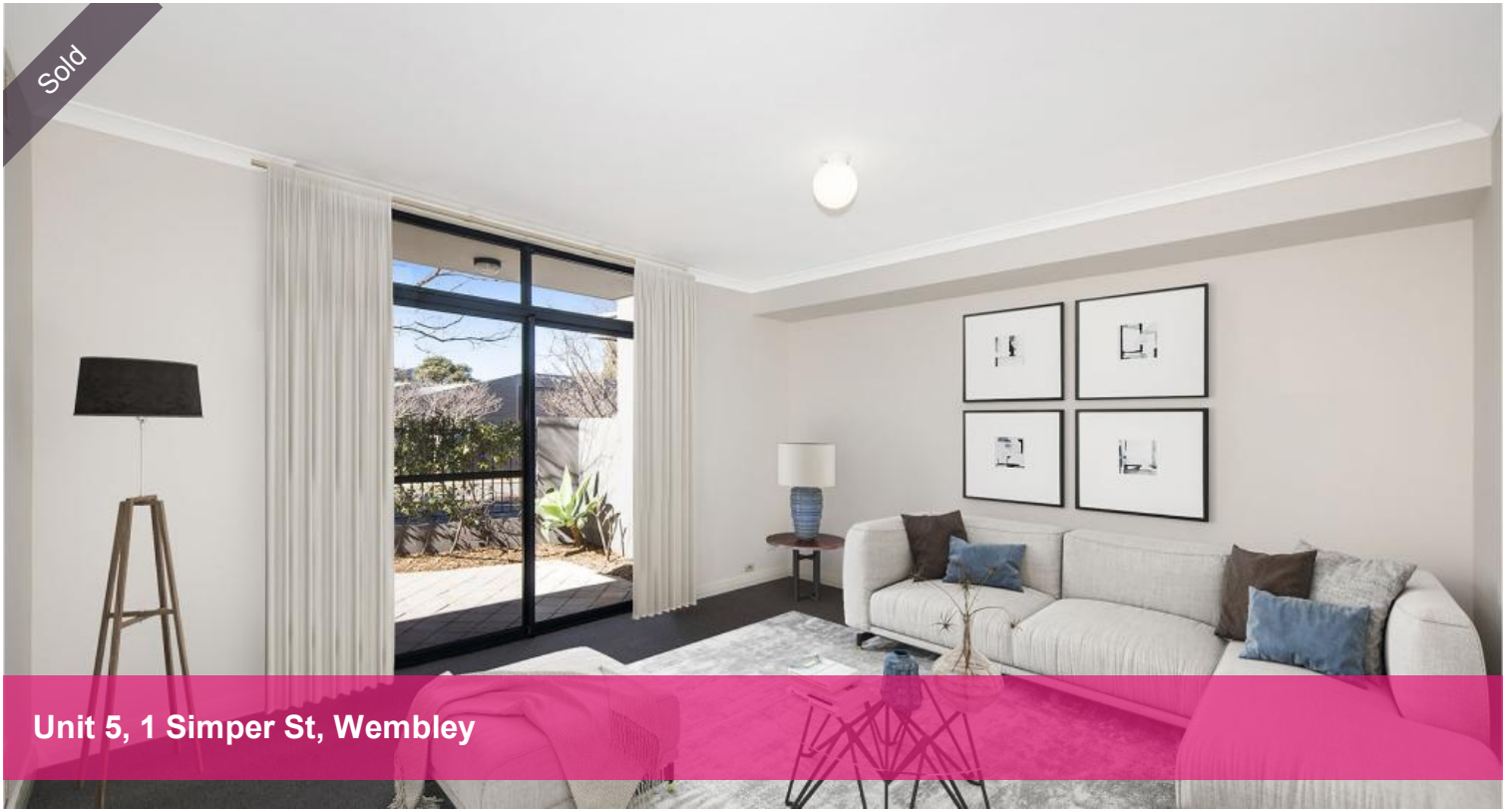


Sold



Unit 5, 1 Simper St, Wembley



Best of Everything

Downsizer, Investor, First Home Buyer or lock and leave this brilliantly designed townhouse is the one!

With a light bright ambiance the lower level offers spacious lounge living with sliding doors to the large courtyard/alfresco area, perfect for entertaining friends and family.

There is also the convenience of a powder room for guests, separate dining room adjacent the kitchen/meals with timber finish cabinets and stainless steel appliances.

Ideally separated on the upper level is the generous size master suite with East facing balcony to enjoy the morning light. Two more bedrooms (both with built in robes), second central bathroom with bath to soak away the days challenges.

There is a huge double garage with rear access and an abundance of storage.

Now for the best part - the location - in the heart of vibrant Wembley with all it's cafes, restaurants, shopping centre with IGA Supermarket, medical facilities and all you need to enjoy life.

🛏 3 🚶 2 🚗 2

Price	SOLD
Property Type	Residential
Property ID	28050

Agent Details

Ray Jennings - 0418 925 909

Office Details

Xceed Real Estate - Sales
Level 8, 3 Hasler Road Herdsman,
WA, 6017 Australia
08 9207 2088

XCEED 
REAL ESTATE

In the very popular Wembley primary School and Shenton College catchments, walking distance of a choice of parks and lakes for exercising.

A short drive will have you in Subiaco, Wembley Golf Course, Reabold Hill and you are situated halfway between the CBD and two beautiful beaches with a direct bus service.

Do not miss it!

Council Rates \$1973.00 p/a approx

Water Rates \$1590.00 p/a approx

Strata \$690.00 p/q approx

The above information provided has been furnished to us by the vendor/s. We have not verified whether or not that information is accurate and do not have any belief in one way or the other in its accuracy. We do not accept any responsibility to any person for its accuracy and do no more than pass it on. All interested parties should make and rely upon their own inquiries in order to determine whether or not this information is in fact accurate.