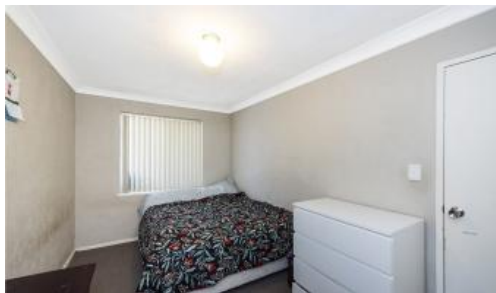


Sold



Unit 111, 125 Herdsman Pde, Wembley



## Great Investment

Top floor apartment in a security complex with great tenants in situ.

With a light bright ambiance, it offers spacious open plan lounge/living/dining adjacent kitchen/meals with plenty of bench and cupboard space.

There are two good size bedrooms (both with BIR's) serviced by a central bathroom/laundry and you can relax on the spacious balcony taking in all the activity on Herdsman Parade.

The complex has it all, lovely green atrium style gardens, gym, pool, alfresco area with gazebo and bbq facilities, half tennis court, under cover parking for one car and plenty of visitors parking.

The location is brilliant, at the rear is the nature wonderland of the Herdsman Wildlife Reserve, not too far away you have the popular Ingredient Tree Café, Herdsman Fresh with beautiful produce, fish supply, butcher and bakery. More cafes, restaurants, parks, schools, shopping centre, medical facilities and the bus goes along Herdsman Parade.

Within fifteen minutes you can be in the CBD or at two beautiful beaches.

🛏 2 📶 1 🚗 1

<b>Price</b>	SOLD
<b>Property Type</b>	Residential
<b>Property ID</b>	28422

### Agent Details

Ray Jennings - 0418 925 909

### Office Details

Xceed Real Estate - Sales  
Level 8, 3 Hasler Road Herdsman,  
WA, 6017 Australia  
08 9207 2088

**XCEED**   
REAL ESTATE

Council rates \$1469.00 p/a approx

Water rates \$983.00 p/a approx

Strata \$613.25 p/q approx

*The above information provided has been furnished to us by the vendor/s. We have not verified whether or not that information is accurate and do not have any belief in one way or the other in its accuracy. We do not accept any responsibility to any person for its accuracy and do no more than pass it on. All interested parties should make and rely upon their own inquiries in order to determine whether or not this information is in fact accurate.*