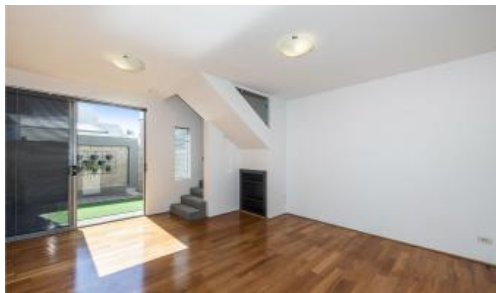


Sold



Unit 5, 29 Rawlins St, Glendalough



Perfect...

... for the First Homebuyer, FIFO, Lock and Leave or Investor, with easy Freeway access to the Airport!

This beautifully presented townhouse with tasteful décor and light bright ambiance is ready for you to move straight in.

The lower level with gleaming timber flooring offers a very spacious lounge/living and separate dining, stunning kitchen featuring stainless steel appliances and plenty of cupboard space.

The upper level presents a lovely living space with sliding door to private balcony, master suite with another balcony and European laundry.

There is very private alfresco entertaining courtyard and undercover parking in a security gated complex.

The location compliments this beautiful easy care home.

Just a short distance to scenic Lake Monger with a full range of activities, the

 1  1  1

| | |
|----------------------|-------------|
| Price | SOLD |
| Property Type | Residential |
| Property ID | 28425 |

Agent Details

Ray Jennings - 0418 925 909

Office Details

Xceed Real Estate - Sales
Level 8, 3 Hasler Road Herdsman,
WA, 6017 Australia
08 9207 2088

XCEED 
REAL ESTATE

nature wonderland of the Herdsman Wildlife Reserve, more parks, shopping centre with IGA supermarket, cafes, takeaway outlets, medical facilities, schools, bus and train services.

Within 15 minutes you can be in the CBD or at two of the best beaches plus Freeway access is super easy.

"Low Strata Fees"

Council Rates \$1515.00 p/a approx

Water Rates \$1164.00 p/a approx

Strata Fees \$430.00 p/q approx

The above information provided has been furnished to us by the vendor/s. We have not verified whether or not that information is accurate and do not have any belief in one way or the other in its accuracy. We do not accept any responsibility to any person for its accuracy and do no more than pass it on. All interested parties should make and rely upon their own inquiries in order to determine whether or not this information is in fact accurate.