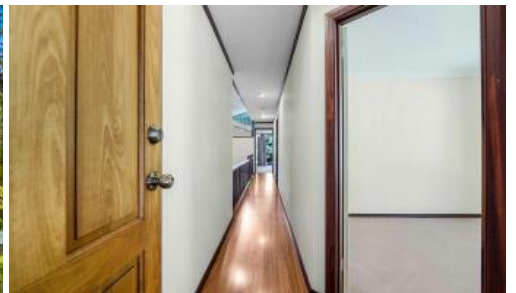




3 The Vista, Gooseberry Hill



A Hillside Masterpiece

Yearning for seclusion without sacrificing award-winning design or access to civilisation? This architecturally-designed four-bedroom, two-bathroom home fulfils the fantasy and could become your new reality. Step inside and discover how the clever orientation of this Western Red Cedar weatherboard home encapsulates the landscape and those jaw-dropping views.

Blackbutt timber flooring and soaring raked ceilings with skylights are just some of the features of this split-level home. 1992 was the year this unique property was built and won the Framed Housing of the Year award by architect Allan Davies. Featuring many architectural features of the era, this is a home for the ages where the new owner could update the existing construction and propel it into the future with some cosmetic upgrades. By further encompassing the beautiful light flooding into this home and capitalising on those epic views, there's an untapped opportunity to add significant value.

From this distinct split-level home, almost every room benefits from a view, whether of the abundant gardens or the sweeping vistas over the valley to Perth's skyline. Those incredible views are even better from your very own viewing platform. Imagine your lifestyle here with multiple indoor and outdoor living zones, including an enclosed deck with a window seat nestled into a picture window. What an inspiring spot to work, read, write or paint.

4 2 2

Price	SOLD
Property Type	Residential
Property ID	28489

Agent Details

Jonathan Marlow - 08 9402 2299

Office Details

Xceed Real Estate - Sales
Level 8, 3 Hasler Road Herdsman,
WA, 6017 Australia
08 9207 2088



You'll reconnect with nature while meandering through the landscaped grounds spanning the 3,063sqm block with several spots for kids to explore. Think of indulgent relaxation and the parties by the below-ground pool surrounded by decking, recessed walls, landscaping and overlooked by a gazebo – cocktails, anyone?

Within moments you can be in Kalamunda's town centre, where you'll find cafes, supermarkets, specialty stores, galleries and amenities. There are several nearby schools, such as Mary's Mount Primary School a short walk away. You're surrounded by parks such as Stirk Park and reserves like the Mundy Regional Park, where you'll enjoy kilometres of walking trails. Hardcore will trekkers will appreciate the proximity to the Bibbulmun Track, trailing for 1000km to Albany. Within 10 minutes, you can be wine tasting in the Bickley Valley, in Midland or at the Perth Airport, and it's just 30 minutes to Perth's CBD.

This unique home needs to be viewed to be fully appreciated and is an excellent option for families, couples and creatives. Please don't hesitate to contact Liz Stewart at liz@xceedre.com.au or on 0422 247 321.

Property features:

- Four bedrooms (three with built-in robes), two bathrooms
- Architecturally designed by Allan Davies
- Below-ground pool with decking and a gazebo
- Epic views from most rooms
- Large kitchen with timber-fronted cabinetry with a dishwasher, dual sinks, gas cooktop and loads of storage and counter space
- Open-plan living with multiple zones
- Guest bedroom overlooks the pool
- Split-level design
- Blackbutt timber flooring
- Soaring raked ceilings with skylights
- Western Red Cedar weatherboard cladding
- Well insulated throughout, including the walls
- Security screens
- Bonus outdoor room with window seating – ideal as a study or studio
- Lined attic with a folding ladder
- Solar panels 1.5kw
- Two split-system air-conditioners
- Wood burner in the open-plan living area
- Parking for additional cars
- Secluded 3063sqm block accessed via a long driveway

- Opportunity to add value with a renovation

Location highlights:

- 750m to Mary's Mount Primary School
- 1.5km to Stirk Park
- 1.7km to Kalamunda Primary School
- 2km to the Bibbulmun Track Northern Terminus
- 2.1km to the Kalamunda town centre
- 2.5km to Mundy Regional Park
- 2.9km to the Kalamunda Water Park
- 2.9km to Kalamunda Senior High School
- 5.5km to Kalamunda Christian School

The above information provided has been furnished to us by the vendor/s. We have not verified whether or not that information is accurate and do not have any belief in one way or the other in its accuracy. We do not accept any responsibility to any person for its accuracy and do no more than pass it on. All interested parties should make and rely upon their own inquiries in order to determine whether or not this information is in fact accurate.