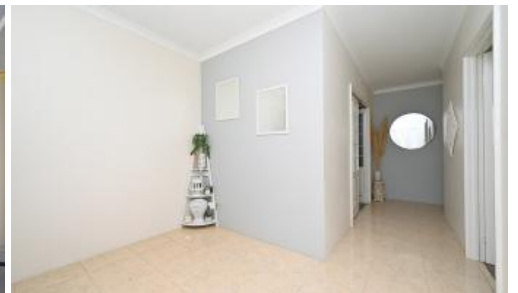


Sold



## 15 Bonvin Gdns, Tapping



HOME OPEN SUN 12TH MARCH....12.00PM – 12.30PM

Andrew and Liselle from Team Thompson have the pleasure in presenting 15 BONVIN GARDENS TAPPING

An extra large 4 x 2 plus study/5th bedroom, home theatre and an expansive open plan living space

Set in a great location opposite Bonvin Park please contact us to arrange a viewing

Stylish street appeal with poured limestone paving, manicured gardens and opposite child friendly Bonvin Park

Portico entry with feature solid double front door entrance into separate foyer

Spacious master bedroom with extra length walk in robe, plantation blinds, split system air-conditioning and TV point

Resort style ensuite with separate his/her vanities, shower with glass screen, corner bath and separate WC

Bedrooms 2, 3 and 4 are all double in size with inbuilt robe to bed 2, double sliding door robe to bed 3 and WIR to bed 4

Spacious 2nd bathroom with vanity, bath, and shower with glass screen

🛏️ 4 🚿 2 🚗 2

<b>Price</b>	SOLD
<b>Property Type</b>	Residential
<b>Property ID</b>	28554

### Agent Details

Jonathan Marlow - 08 9402 2299

### Office Details

Xceed Real Estate - Sales  
Level 8, 3 Hasler Road Herdsman,  
WA, 6017 Australia  
08 9207 2088

**XCEED**   
REAL ESTATE

Study / home office or 5th bedroom if required with split system air-conditioning

Massive kitchen with 5 burner gas hotplate, rangehood, stainless steel wall oven, dishwasher, fridge/freezer recess, walk in pantry and all with ample bench and cupboard space

Expansive living areas including meals, family and game room with feature plantation blinds and sliding door access outdoors

Separate enclosed theatre / media room with inbuilt speakers to ceiling and multi level floor for the full cinema experience

High ceilings through out

Storage cupboard to hallway

Spacious laundry with inbuilt bench and cupboards

Ducted evaporative air-conditioning through out

Full length alfresco entertaining with feature poured limestone paving

Separate lawn area surrounded by easy care gardens

8 Solar panels to roof

Double lockup garage (7.5m x 7m) with secure roller door access to backyard plus internal access to kitchen

House Area...238m<sup>2</sup> internal living with a total area 328m<sup>2</sup>

Built in 2007

Block size: 591m<sup>2</sup>

*The above information provided has been furnished to us by the vendor/s. We have not verified whether or not that information is accurate and do not have any belief in one way or the other in its accuracy. We do not accept any responsibility to any person for its accuracy and do no more than pass it on. All interested parties should make and rely upon their own inquiries in order to determine whether or not this information is in fact accurate.*