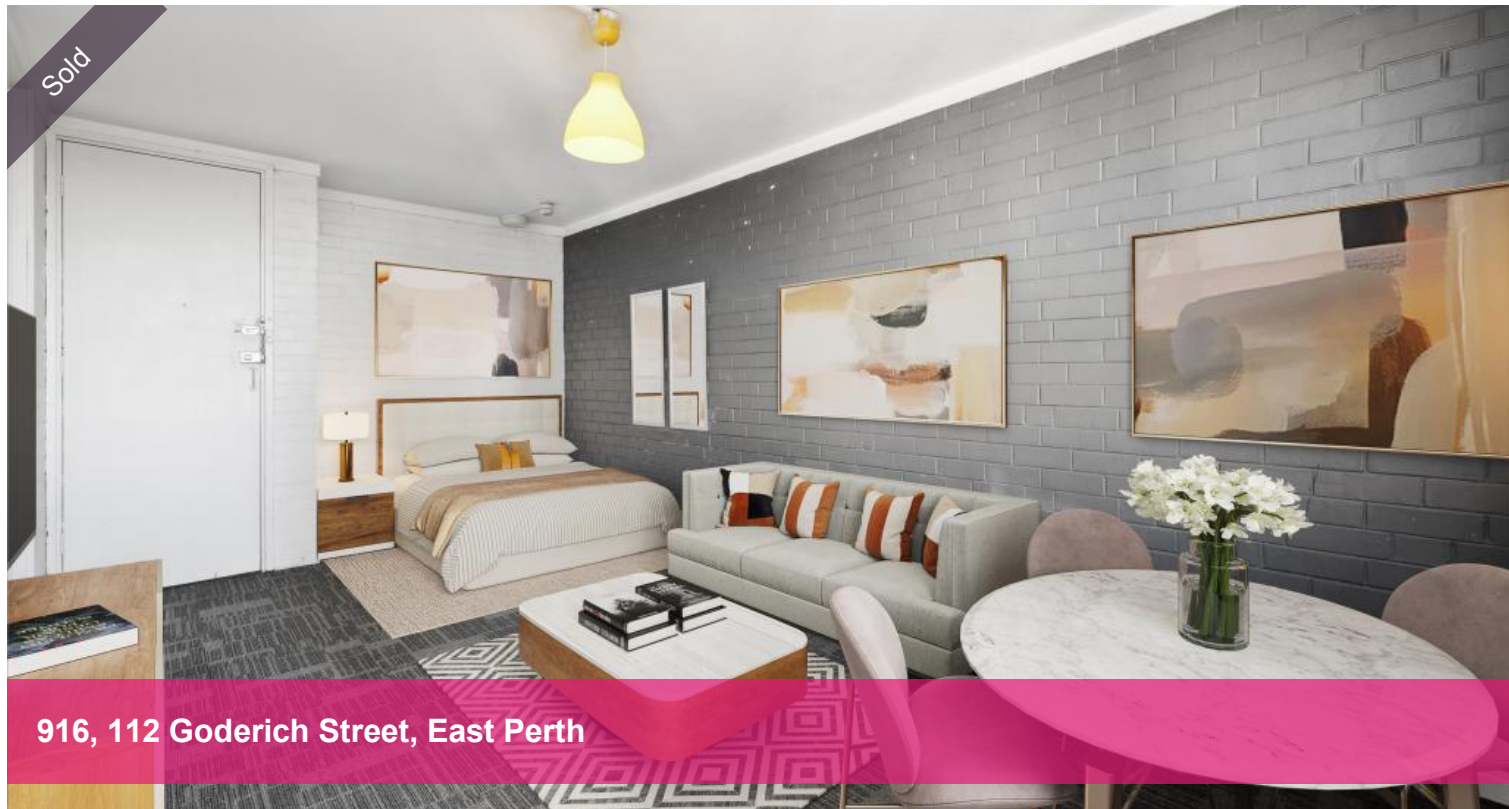


Sold



916, 112 Goderich Street, East Perth



## Location! Location! Location!

Discover a modern oasis in the heart of East Perth, this apartment is located in the esteemed Bay Apartments complex. Boasting a prime location and an array of desirable features, this residence offers an ideal blend of comfort and convenience.

Currently vacate, move in straight away!

Or buy and rent it out

Market rental:\$400/W, Yearly Yield over 9%\*

### Key Features:

**Design:** Step into a well-designed space with a functional kitchenette featuring Electric cooking, and a comfortable living/dining area.

**North Facing** with lots of natural sunlight

**Ninth Floor Advantage:** Enjoy the elevated View

**Potential Galore:** Customize and add value to this already inviting space with the opportunity for a personal touch.

**Secure Living:** Benefit from a secure building with a buzzer entry system, ensuring peace of mind.

**On-Site Amenities:** Take advantage of the shared laundry room on-site, providing added convenience.

**Parking Made Easy:** A designated car bay means you'll never have to worry about parking.

Water rate - \$890.1 p/a

🛏 1 🚶 1 🚗 1

**Price** SOLD for \$210,000

**Property Type** Residential

**Property ID** 30122

**Floor Area** 29 m2

### Agent Details

Ken Yan - 0488 886 698

### Office Details

Xceed Real Estate - Sales

Level 8, 3 Hasler Road Herdsman,

WA, 6017 Australia

08 9207 2088

**XCEED**   
**REAL ESTATE**

Strata Levy - \$614.85 p/q

Location Highlights:

**Proximity to Nature:** Just a short walk away from the scenic Swan River, Claisebrook Cove, and the iconic Matagarup Bridge.

**Sports Enthusiasts' Dream:** Catch games and events at the nearby Optus Stadium, perfect for sports lovers.

**City Access:** Seamlessly navigate the city with the free city cat bus stop conveniently located at your doorstep.

**CBD Convenience:** The heart of the Central Business District is a mere 1.4km away, offering a wealth of shopping, dining, and entertainment options.

**Green Retreat:** Wellington Square Park is a mere 400m from your doorstep, providing a tranquil escape in the midst of urban life.

This property presents an exceptional opportunity for both urban professionals seeking a convenient city pad and astute investors looking to capitalize on the thriving rental market.

Don't miss your chance to experience modern urban living. Arrange a viewing today! For inquiries, to schedule a viewing, or for strata information please contact Ken Yan at 048888 6698.

**Disclaimer:** Whilst every care has been taken in the preparation of the marketing for this property, accuracy cannot be guaranteed. Prospective buyers should make their own enquiries to satisfy themselves on all pertinent matters. Details herein do not constitute any representation by the Seller or the Seller's Agent and are expressly excluded from any contract.

*The above information provided has been furnished to us by the vendor/s. We have not verified whether or not that information is accurate and do not have any belief in one way or the other in its accuracy. We do not accept any responsibility to any person for its accuracy and do no more than pass it on. All interested parties should make and rely upon their own inquiries in order to determine whether or not this information is in fact accurate.*