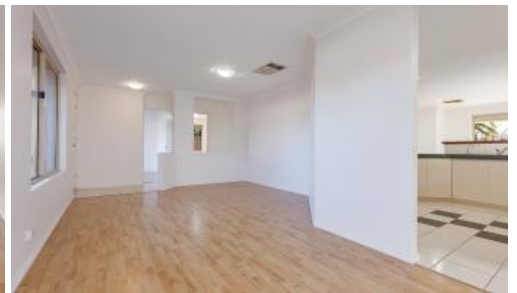


Leased



15 Serpentine Rise, Success



Family home in a cul-de-sac location!

Tucked away in a serene corner of Success, this homely 4-bedroom, 2-bathroom family residence sits on a generous block. Its location is just a relaxed stroll away from the picturesque Jubilee Park, placing it perfectly for a lifestyle that blends comfort with the tranquility of nature.

The interior of the home exudes low-key elegance. The expansive front formal lounge and bedrooms feature easy-to-maintain timber-look flooring, offering a warm and welcoming atmosphere. The open-plan family area, dining space, and kitchen, on the other hand, boast tiled finishes. This dual living arrangement provides personalized living options catering to diverse needs and preferences.

The master bedroom is the standout feature among the bedrooms, complete with its own private ensuite bathroom, offering a haven of privacy and relaxation. The main family bathroom is well-equipped to handle the demands of a busy household, featuring a separate shower and bathtub to cater to a range of needs.

Stepping outside from the main living area, one encounters a charming rear patio. This covered space invites alfresco entertaining and overlooks an inviting backyard. With an abundance of potential and room to spare, it's perfect for children's playtime or a pet's paradise.

A little about the location:

 4  2  2

Price \$750.00 per week
Property Type Rental
Property ID 30986

Agent Details

Kristie-Lee Newnham - 08 9207 2088

Office Details

Xceed Real Estate - Property Management
Level 8, 3 Hasler Road Herdsman, WA, 6017 Australia
08 9207 2088

XCEED 
REAL ESTATE

It's nestled close to Jandakot Primary School, Emmanuel Catholic College, Cockburn Gateway Shopping City, a host of restaurants, medical facilities, Cockburn Central Train Station, the freeway, Coogee Beach, and much more.

Other features:

- Huge block
- Security shutters for added peace of mind
- Two separate living areas for versatile comfort
- 4 bedrooms and 2 bathrooms – space for everyone
- A Pot Belly fireplace for cozy winter nights
- Ducted Evaporative air conditioning for comfortable summers
- Fully reticulated gardens for easy upkeep
- A double carport for secure parking
- A vast wrap-around patio area for outdoor entertaining

Available: 27/11/2024

Lease term: 12 months minimum

Please include a cover letter in your application.

HOW TO BOOK AN INSPECTION FOR THIS PROPERTY:

If you would like to book an inspection for this property, then simply scroll down past the description and click the 'Book an Inspection Time' button and select from one of the available times. 2apply applications will be accepted once the property has been viewed.

Home open dates and times are subject to change so it is essential you register so that we can keep you informed.

The above information provided has been furnished to us by the vendor/s. We have not verified whether or not that information is accurate and do not have any belief in one way or the other in its accuracy. We do not accept any responsibility to any person for its accuracy and do no more than pass it on. All interested parties should make and rely upon their own inquiries in order to determine whether or not this information is in fact accurate.