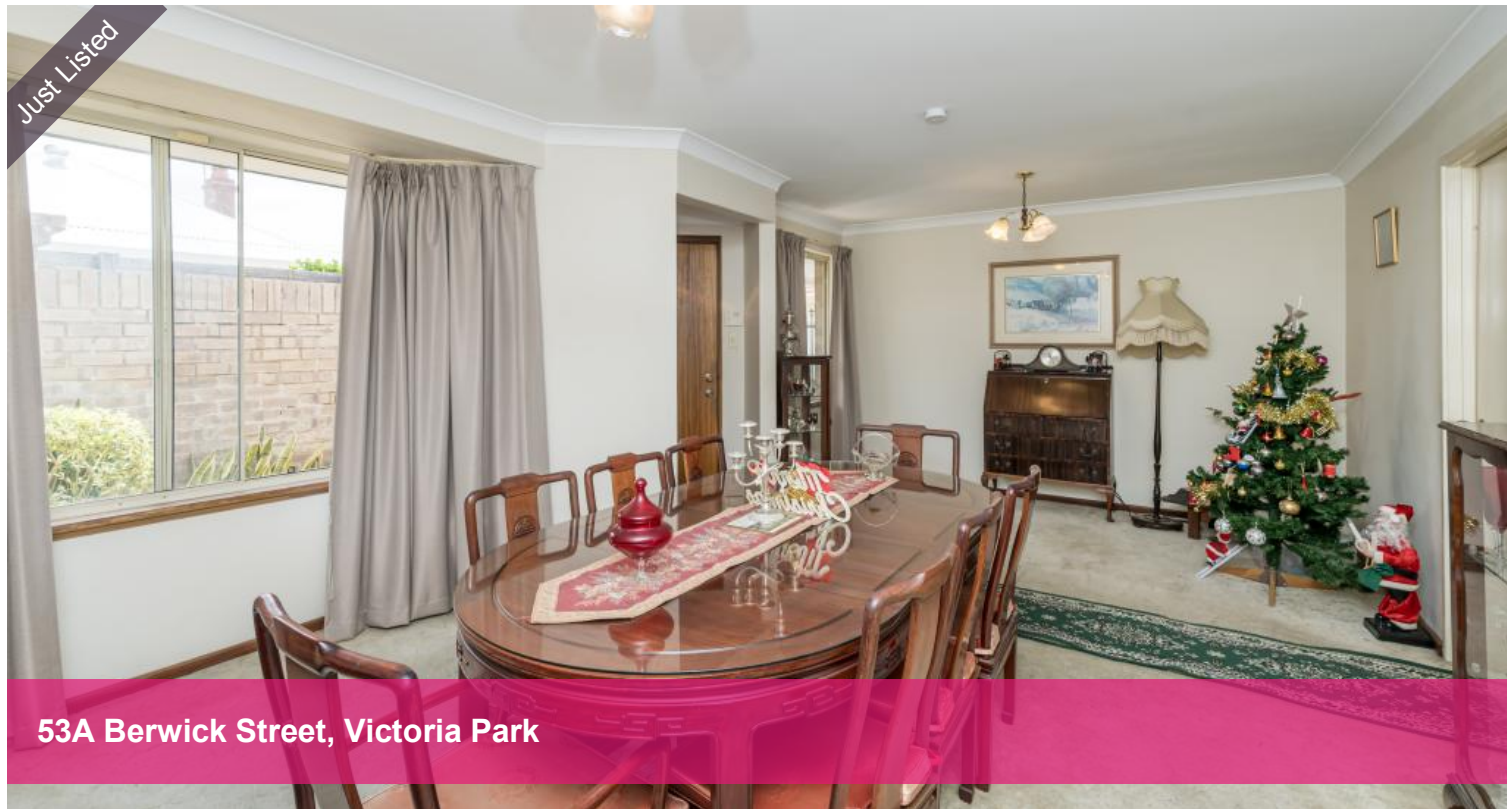


Just Listed



53A Berwick Street, Victoria Park



A Home Full of Possibilities in Vibrant Victoria Park

Discover the charm and convenience of 53A Berwick Street, a beautifully designed 3-bedroom, 2-bathroom home that offers the perfect blend of style, space, and practicality. From the moment you step inside, you'll be greeted by a thoughtfully crafted layout that caters to modern living.

The home features two spacious living areas, providing plenty of room for relaxation, entertaining, or even a dedicated workspace. All three bedrooms are generously sized with built-in Wardrobes and come equipped with ceiling fans, ensuring comfort throughout the year. The split-system air conditioning in the living and kitchen areas adds an extra layer of ease, keeping the space perfectly cool in summer and cosy in winter.

Step outside to discover your own private oasis. The beautiful garden area is the perfect setting to enjoy your morning coffee or relax in the evening with a good book. This tranquil space enhances the home's charm, providing a peaceful escape right in your backyard.

Located in the heart of Victoria Park, this property is a true lifestyle gem. With popular cafes, restaurants, and a well-stocked supermarket just a short drive away, you'll love the convenience of having everything you need right on your doorstep. Whether you're starting your day with a coffee from a nearby café, enjoying a leisurely dinner out, or picking up groceries, it's all just moments away.

🛏 3 🚿 2 🚗 1

Price From \$790,000
Property Type Residential
Property ID 31083

Agent Details

Kenny Poi - 0481 340 343
Graeme Correy - 0419 902 309

Office Details

Xceed Real Estate - Sales
Level 8, 3 Hasler Road Herdsman,
WA, 6017 Australia
08 9207 2088

XCEED 
REAL ESTATE

This home is perfect for families or investors looking to secure a property in one of Perth's most desirable suburbs. Don't miss your chance to experience the best of Victoria Park living. Contact Kenny Poi at 0481 340 343 or Graeme Correy 0419 902 309 today to arrange a viewing!

Features include:

3 bedroom

2 Bathroom

Split unit aircon in Living & kitchen area

Built-in Wardrobes

Laundry

Shed

Land size 256m²

Location (approx. distances):

350m Raphael Park

800m McCallum Park

1.2km Albany Highway (Cafes, Restaurants)

1.5km Woolworth

1.7km Victoria Park Central

2.0km Hawaiian's Park Centre

2.2km Victoria Park Station

2.7km Crown Hotel & Casino

2.9km Optus Stadium

3.7km Collier Park Golf

3.9km Curtin University

4.1km Elizabeth Quay

5.1km Perth CBD

The above information provided has been furnished to us by the vendor/s. We have not verified whether or not that information is accurate and do not have any belief in one way or the other in its accuracy. We do not accept any responsibility to any person for its accuracy and do no more than pass it on. All interested parties should make and rely upon their own inquiries in order to determine whether or not this information is in fact accurate.