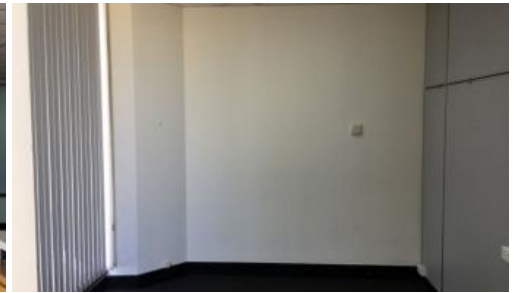


Leased



Prime Ground floor Location / Street Front Office one off the corner of Stirling St facing into Spencer Street.

- Great exposure located one suite off the corner of Spencer & Stirling Streets  
Two suites of approximately 149 sqm combined facing into Spencer St, on ground floor.
- Opposite Centrepoint City Car Park which has 2 hours free parking.
- Air-conditioned

For Further information, please contact Stuart Paterson Xceed Commercial  
Mob: 0433199676

*The above information provided has been furnished to us by the vendor/s. We have not verified whether or not that information is accurate and do not have any belief in one way or the other in its accuracy. We do not accept any responsibility to any person for its accuracy and do no more than pass it on. All interested parties should make and rely upon their own inquiries in order to determine whether or not this information is in fact accurate.*

**Price** \$2,793.75 pcm Plus  
Outgoings + GST  
**Property Type** Commercial  
**Property ID** 7650  
**Office Area** 149 m2

#### Agent Details

#### Office Details

Xceed Real Estate - Commercial  
Leasing & Sales  
Level 8, 3 Hasler Road Herdsman,  
WA, 6017 Australia  
08 9207 2088

**XCEED**   
REAL ESTATE