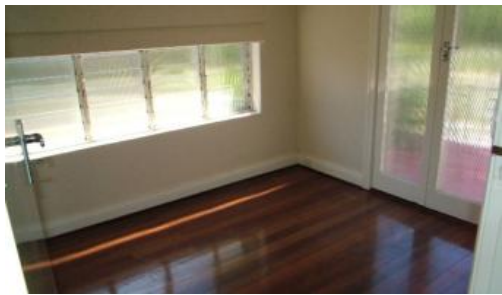


Sold



13 North Street, Mount Lawley



## Neighbourhood of Picturesque Homes

Love big, old homes?

Enjoy the luxury of large-size rooms in this period home resplendent on 885sqm bore reticulated block and strategically positioned for primary schools, high schools & ECU.

Larry Gallagher 0418 946 357

*The above information provided has been furnished to us by the vendor/s. We have not verified whether or not that information is accurate and do not have any belief in one way or the other in its accuracy. We do not accept any responsibility to any person for its accuracy and do no more than pass it on. All interested parties should make and rely upon their own inquiries in order to determine whether or not this information is in fact accurate.*

🛏 3 🗺 1 🚗 1 🏠 885 m2

<b>Price</b>	SOLD
<b>Property Type</b>	Residential
<b>Property ID</b>	7742
<b>Land Area</b>	885 m2

### Agent Details

Larry Gallagher - 0418 946 357

### Office Details

Xceed Real Estate - Commercial  
Leasing & Sales  
Level 8, 3 Hasler Road Herdsman,  
WA, 6017 Australia  
08 9207 2088

**XCEED**   
REAL ESTATE