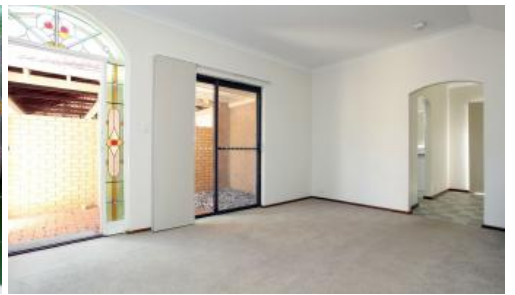


Sold



Unit 6, 52 Lawley Crescent, Mount Lawley



HUGE YARD ON LAWLEY CRESCENT

This large, three bedroom, townhouse in sought after complex has a large garden, Ducted, reverse cycle, air conditioning, gas points for further heating, new kitchen and bathroom with Essastone bench-tops, gas cooking, new paint, new blinds and is simply waiting for a new owner.

Make it your bachelor pad or family home, this property is versatile and will suit a buyer looking for a leafy street location near transport, shopping and in the Mount Lawley school zone.

The above information provided has been furnished to us by the vendor/s. We have not verified whether or not that information is accurate and do not have any belief in one way or the other in its accuracy. We do not accept any responsibility to any person for its accuracy and do no more than pass it on. All interested parties should make and rely upon their own inquiries in order to determine whether or not this information is in fact accurate.

🛏 3 🚿 1 🚗 1

Price SOLD for \$520,000
Property Type Residential
Property ID 825

Agent Details

Adam Whitford - 0406 616 608

Office Details

Xceed Real Estate - Central
3 Hasler Rd Herdsman, WA, 6017
Australia
08 9207 2088

XCEED 
REAL ESTATE